

COMMON AGRICULTURAL POLICY post-2020

The new green architecture

The Greener Agriculture for a Sustainable Sea, GRASS 2019
Warsaw 25/09/2019

#FutureofC
AP

The new green architecture

I. Key elements of the reform



CAP SPECIFIC OBJECTIVES ON THE ENVIRONMENT & CLIMATE

The essence:



Climate
change

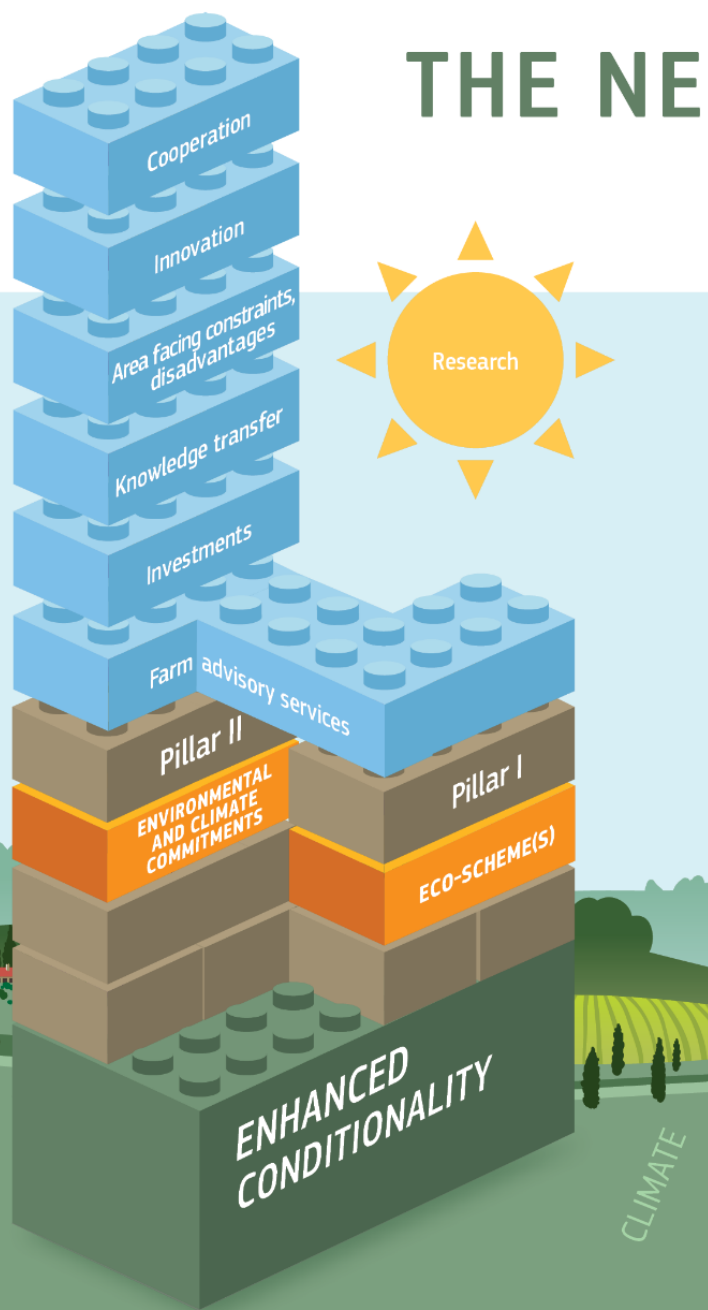


Natural
resources



Biodiversity
and
landscapes

THE NEW GREEN ARCHITECTURE



A JOINED-UP, RESULTS-BASED APPROACH

- MS plan use of **both CAP Pillars together** (including sectorial interventions)
- **SWOT analysis, needs assessment**
- Selection of tools from **flexible toolbox**
- **Targets** set, achievements monitored
- **Consultation with national stakeholders**
- CAP plans approved by Commission



European
Commission



Key steps towards the CAP Strategic Plan

1/ SWOT analysis

Context (impact)
indicators

See "Analytical factsheets"



2/ Identification, prioritisation and ranking of needs

In relation with EU legislation on
water, air, biodiversity, climate
change, energy and pesticides



3/ Intervention strategy



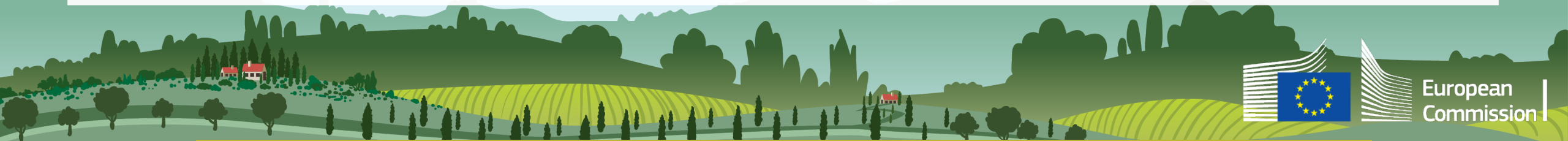
*Setting GAEC
standards*



*Selection of the interventions
and financial allocations*

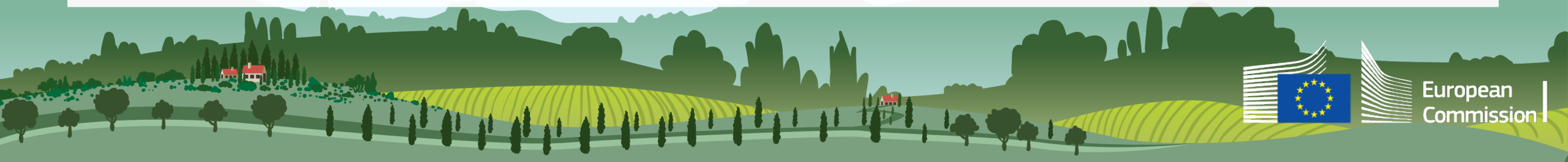


*Targets for result
indicators*

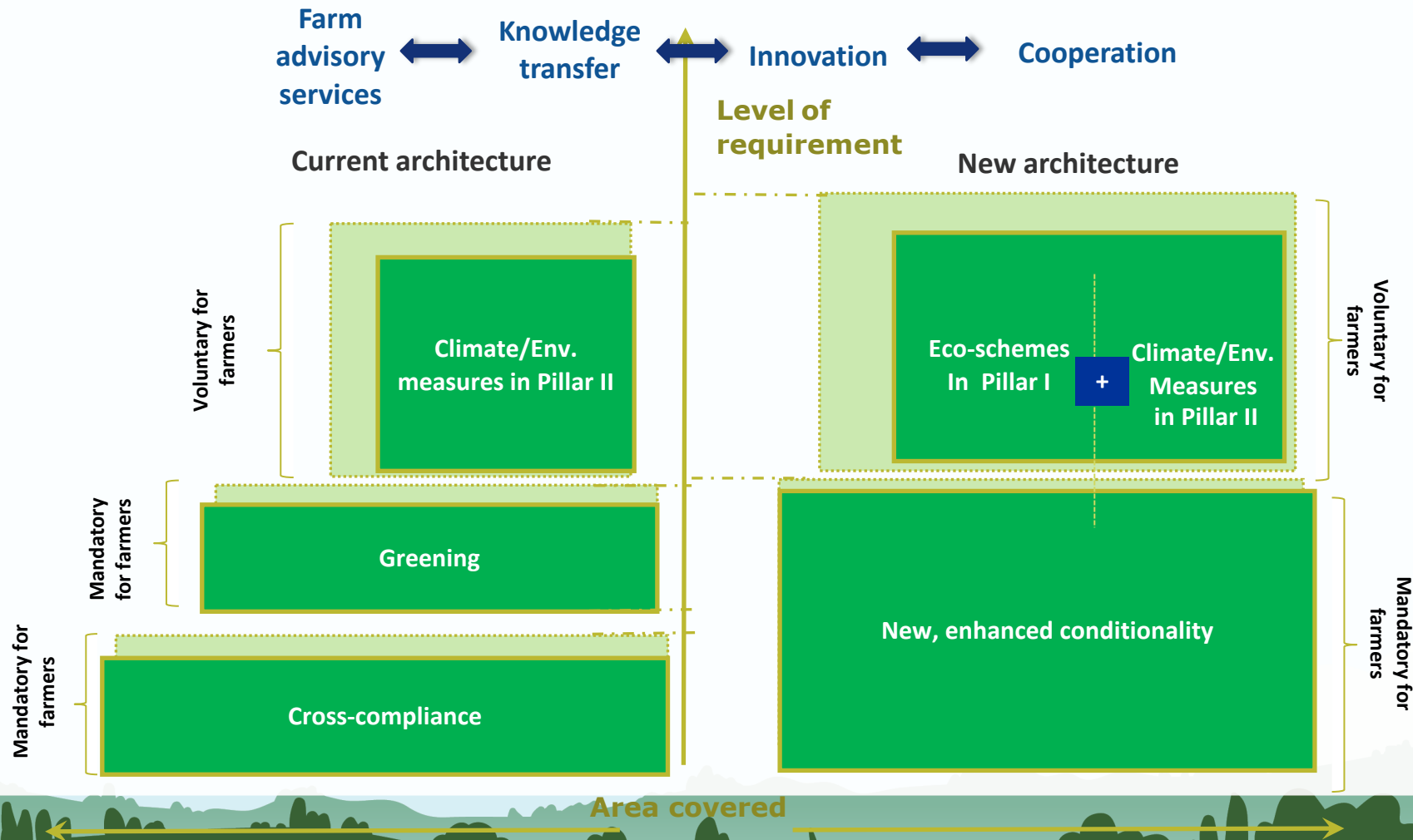


LINKS TO NON-CAP LEGISLATION ON THE ENVIRONMENT AND CLIMATE

- **Link in CAP rules to EU legislation indicated in Annex IX:**
 - climate change
 - water (Water Framework Directive – Nitrate Directive)
 - air (Air quality Directive)
 - biodiversity (Natura 2000 Directives)
 - energy
 - pesticides (Sustainable use of pesticides Directive)
- MS' CAP plans must:
 - **take account of** analysis, targets from the relevant national action plans etc.
 - make an appropriate **contribution to** achieving those targets
 - be drafted involving **environmental authorities**



CURRENT VS NEW GREEN ARCHITECTURE



- New elements
- Elements originating in greening
- Reformulated elements
- Elements remaining (more or less) the same



ENHANCED CONDITIONALITY: OVERVIEW

Environment and climate

SMRs:

- Birds and Habitats Directives
- **Water Framework Directive**
- Nitrates Directive

GAEC standards:

- climate change
- water
- soil
- biodiversity and landscapes

Public, animal and plant health

SMRs:

- Animal Identification & Registration
- Pesticides authorisation Regulation
- **Directive on the sustainable use of pesticides**
- Hormones ban Directive
- General Food Law
- Notification of diseases

Animal welfare

SMRs

- Directives for the protection of:
- Calves
 - Pigs
 - Animals kept for farming purposes

Farm advisory services (embedded in AKIS)

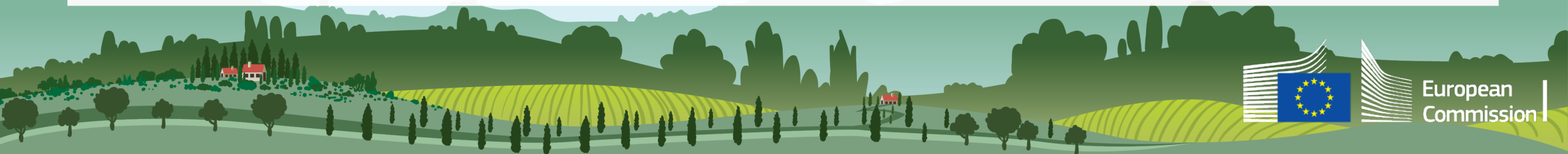
Conditionality

EU legislation on biodiversity, water, air and use of pesticides

Antimicrobial resistance

Risk management

Innovation support



European
Commission



CLIMATE CHANGE
ACTION

CONDITIONALITY: BALANCED AMBITION

CLIMATE CHANGE
(mitigation and
adaptation)

GAEC 1: Maintenance of permanent grassland

Previously
greening

GAEC 2: Protection of wetland & peatland

new

GAEC 3: Ban on burning arable stubble

WATER

GAEC 4: Establishment of buffer strips along water courses

GAEC 5: Use of Farm Sustainability Tool for Nutrients

new

SOIL

(protection and quality)

GAEC 6: Tillage management and slope consideration

GAEC 7: No bare soil in most sensitive period(s)

GAEC 8: Crop rotation (instead of crop diversification)

Previously
greening

BIODIVERSITY
& LANDSCAPE

GAEC 9: Share of agricultural land devoted to non-productive areas

Previously
greening

GAEC 10: Ban on converting permanent grassland in Natura 2000

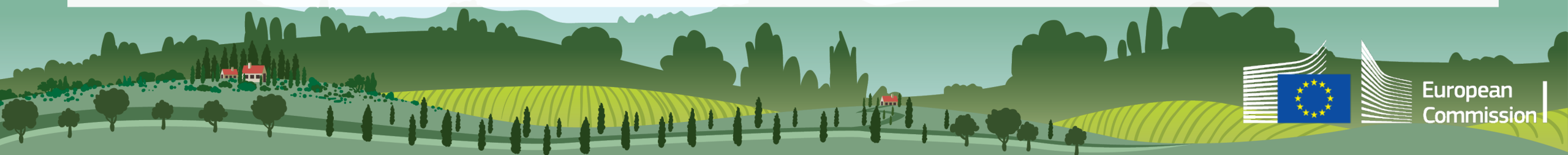
Previously
greening



Natural
ressources



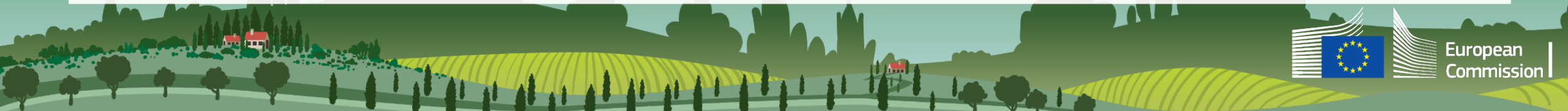
PRESERVE
LANDSCAPES &
BIODIVERSITY



European
Commission

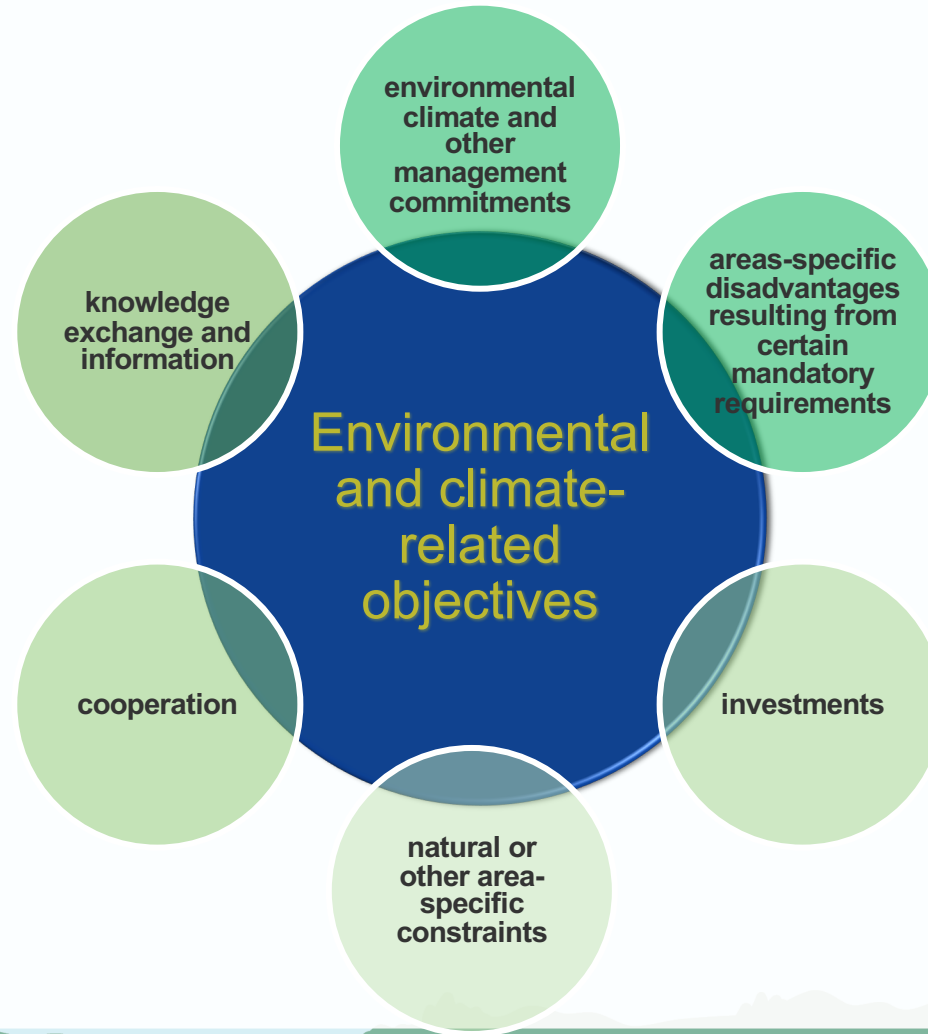
PILLAR I "ECO-SCHEMES"

- **New way** of spending Pillar I funding on the environment and climate (i.e. without co-financing)
 - Mandatory for MS, **voluntary for farmers**
 - **Annual** commitments and payments
 - **For genuine farmers – on eligible hectares**
 - Commitments **above baseline** (SMR – GAEC – requirements stemming from national law – maintenance of agricultural areas) and **different/consistent with Pillar II RD** management commitments
 - MS have flexibility over **content** of eco-schemes...
 - ...and flexibility over payment – possibility of incentives
 - **environmental “top-ups”** to basic income support;
 - or **compensation payments** based on costs incurred, income foregone
- Can be useful to design a scheme that is attractive to a larger number of farmers – and will help achieve a higher level of ambition
- Target areas in which MS have particular challenges (e.g. emissions or nitrates or biodiversity)

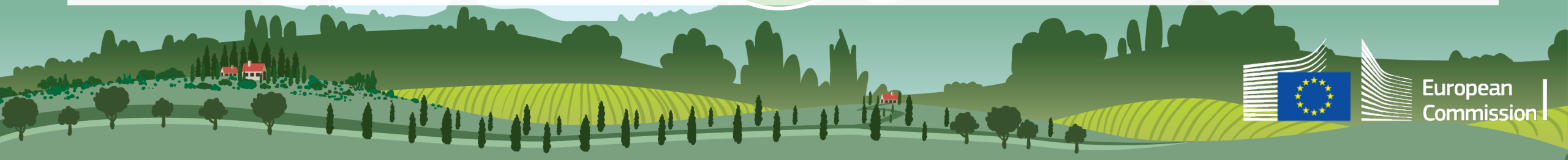


PILLAR II - RD interventions for the environment & climate

- **Full range** of relevant Pillar II support remains available...

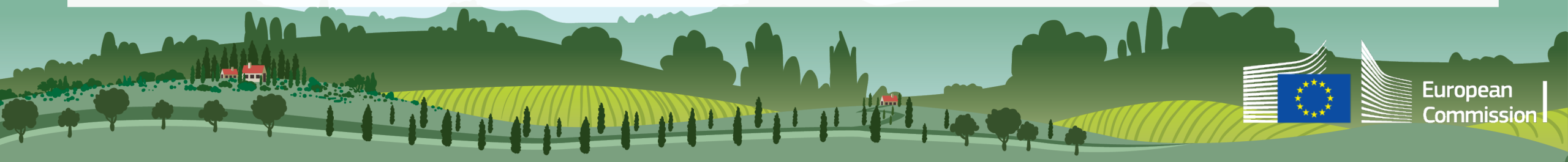


"Negative list" for investment support (unsustainable irrigation & forestry)



ECO-SCHEMES & ENVIRONMENTAL-CLIMATE COMMITMENTS

SCHEMES FOR THE CLIMATE AND THE ENVIRONMENT – ECO-SCHEMES (ART 28)	ENVIRONMENT, CLIMATE AND OTHER MANAGEMENT COMMITMENTS (ART 65)
Funded by Pillar I (annual, not co-funded)	Funded by Pillar II (multiannual, co-funded)
Payments to genuine farmers	Payments to farmers and other beneficiaries
Payment per hectares eligible to direct payment	Payment per hectares (not necessarily eligible to direct payments)/animal
Annual (or possibly multiannual)	Multiannual (5 to 7 years or more) and contractual commitments
Compensation for cost incurred/income foregone, or Incentive payment: top-up of basic income support (amount to be fixed and justified by MS)	Compensation for cost incurred/income foregone





Key steps towards the CAP Strategic Plan

1/ SWOT analysis

Context (impact)
indicators

See "Analytical factsheets"



2/ Identification, prioritisation and ranking of needs

In relation with EU legislation on
water, air, biodiversity, climate
change, energy and pesticides



3/ Intervention strategy



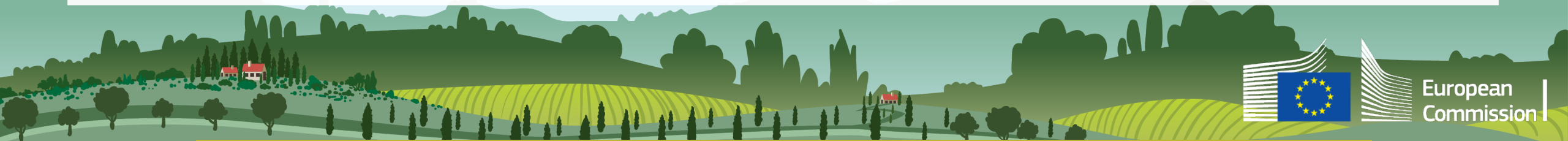
*Setting GAEC
standards*



*Selection of the interventions
and financial allocations*



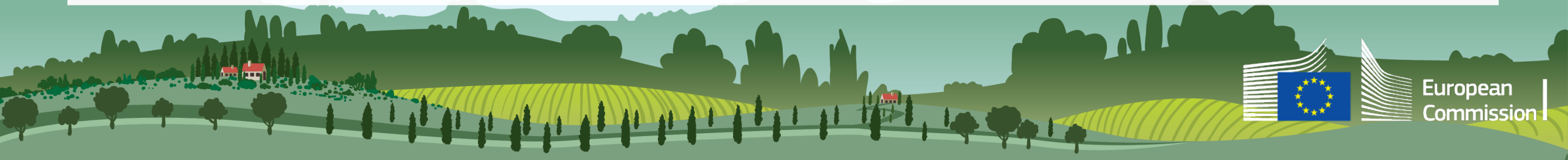
*Targets for result
indicators*





BUDGET ALLOCATION

- **EAGF:** No ring-fenced spending (but MS must provide for Pillar I eco-schemes in CAP plans)
- **EAFRD:**
 - At least 30% of each MS's EAFRD funding to be spent on interventions addressing the three environment- and climate-related specific objectives (exclusion of areas facing natural constraints (ANCs)).
- Possibility to transfer funds between Pillars (15% + 15% for the environment/climate)



The new green architecture

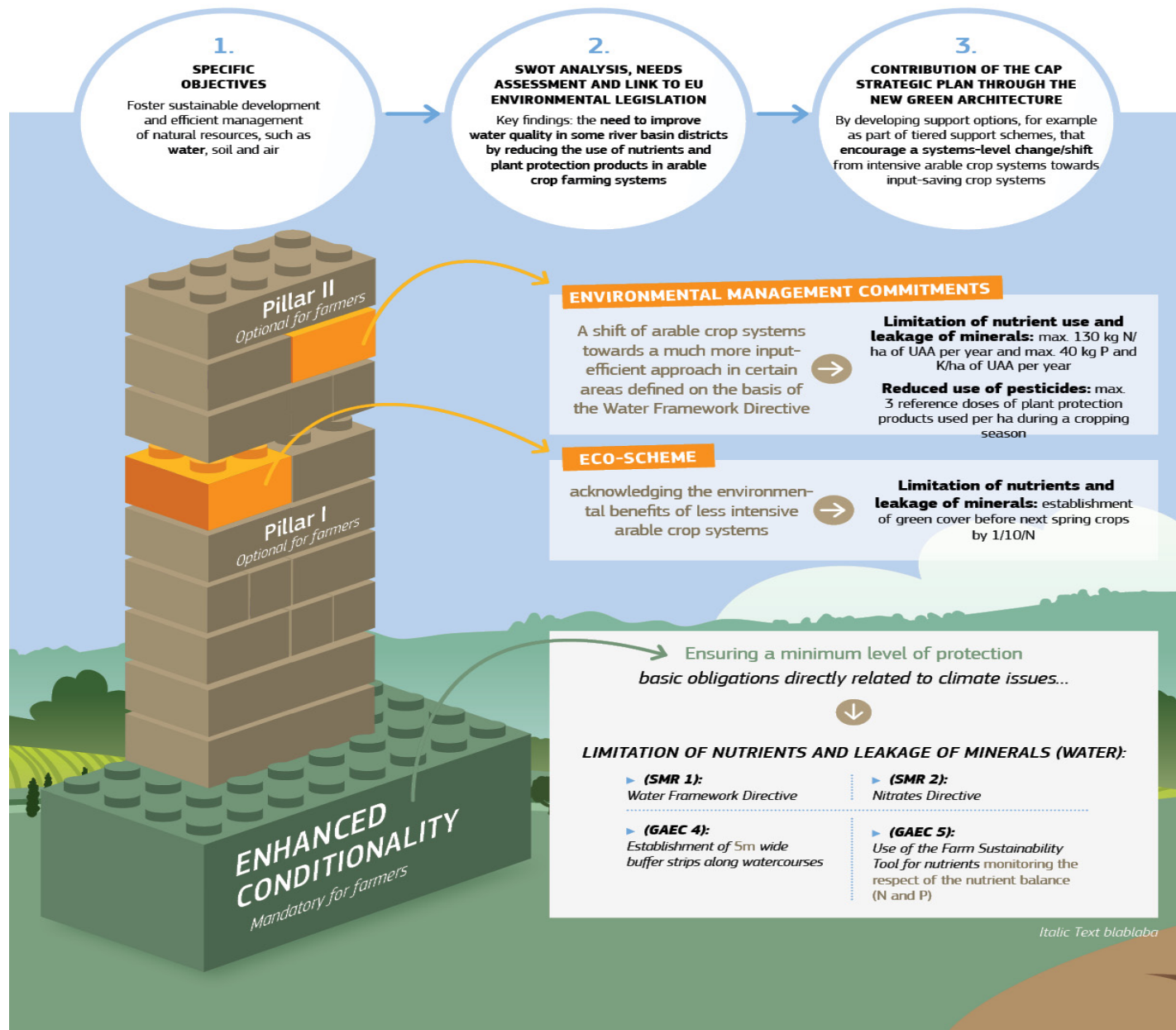
II . Hypothetical example



The new green architecture of the cap

WATER

Example of a Member State's implementation



Thank you

Further information is available at:

https://ec.europa.eu/commission/interim_en **(new Commission, priorities)**

https://ec.europa.eu/info/food-farming-fisheries/key-policies/common-agricultural-policy/future-cap_en#objectives **(future CAP)**

https://ec.europa.eu/info/files/brochure-environmental-benefits-and-simplification-post-2020-cap_en **(new green architecture)**

https://ec.europa.eu/info/food-farming-fisheries/farming/facts-and-figures/performance-agricultural-policy/agriculture-country/cap-specific-objectives-country-factsheets_en **(analytical factsheets per MS)**

